

Technical Information Sheet

Product Code: 8E100N



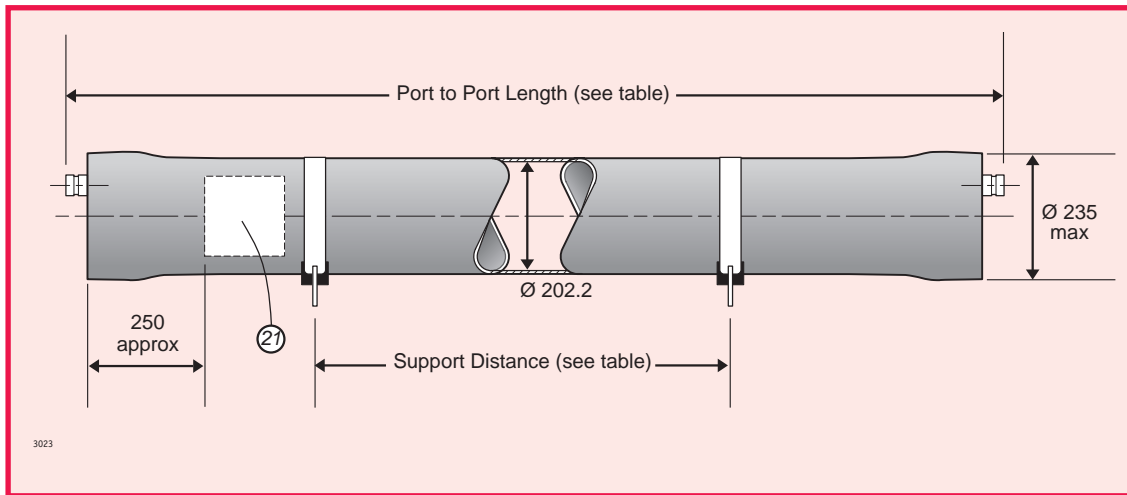
8" End Port Pressure Vessel

END PORT

100 psi (6.9 bar)

Working Pressure: **100 psi**
 Assembly Drawing: **1MNC 3023**

Working Temperature: **-7 to 45°C**
 Does not conform to ASME X



Body of vessel is manufactured completely from glass reinforced epoxy resins.

Please advise membrane type and length when requesting further details.

Pressure vessels can be produced to cover all leading manufacturers membranes regardless of length.

Please adhere to recommended support positions, if in doubt contact Phoenix Vessels.

Feed and concentrate connections: 1.5" Victualic

Product connections: 1.0" BSP Parallel (Male)

| No of 40" Elements | Port to Port Length +/-7mm | Support Distance | | Max Dry Weight |
|--------------------|----------------------------|--------------------|--------------------|----------------|
| | | 2 Supports Max/Min | 3 Supports Max/Min | |
| 1 | 1549 | 1100 700 | - - | 20 kg |
| 1.5 | 2057 | 1400 1000 | - - | 23 kg |
| 2 | 2565 | 1700 1300 | - - | 26 kg |
| 3 | 3581 | 2400 1800 | 2400 1800 | 33 kg |
| 4 | 4597 | 2950 2450 | 3250 2450 | 39 kg |
| 4.5 | 5105 | 3200 2800 | 3700 2800 | 42 kg |
| 5 | 5613 | 3450 3150 | 4150 3150 | 47 kg |
| 6 | 6629 | 4000 3800 | 5000 3800 | 55 kg |
| 7 | 7645 | - - | 5850 4850 | 62 kg |
| 7.5 | 8153 | - - | 6200 5350 | 65 kg |

All dimensions in mm

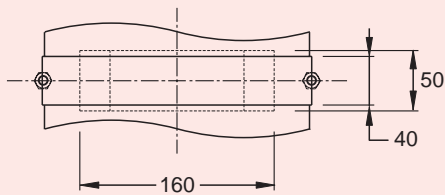
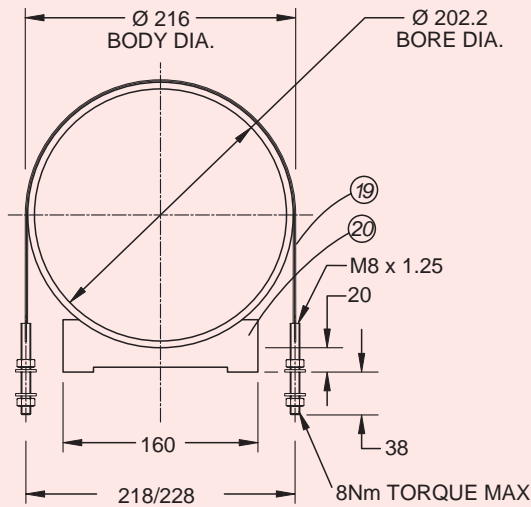
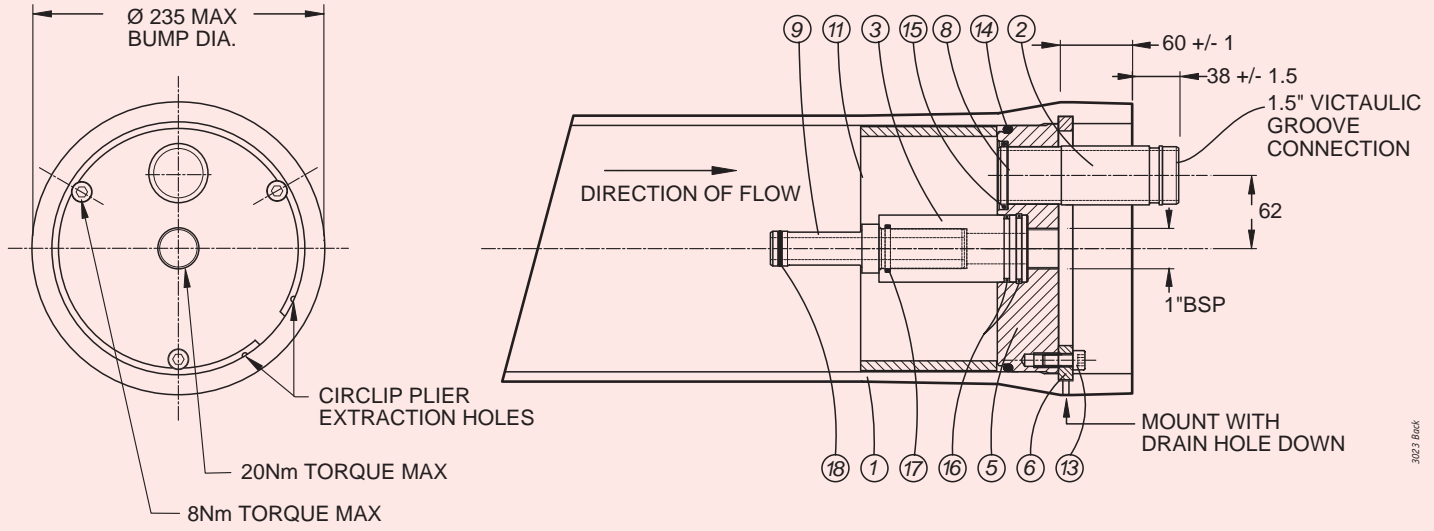
All dimensions and weights are nominal unless stated otherwise.

Phoenix Vessels

8" End Port Pressure Vessel

END PORT

100 psi (6.9 bar)



Tighten all bolts/nuts to 50% of the maximum torque figure.
DO NOT EXCEED THE MAXIMUM TORQUE.

For lubricants and general assembly refer to the User Guide.

| Item | Description | Material | Part No | No. off |
|------|-----------------------|--------------------------|------------------|---------|
| 1 | Vessel Body | Glass Fibre Epoxy Resin | PVL 3109 | 1 |
| 2 | Feed/Concentrate Port | Thermoplastic | PVL 2488 | 2 |
| 3 | Hub | Thermoplastic | PVL 1550 | 2 |
| 4 | | | | |
| 5 | End Cap | Thermoplastic | PVL 2858 | 2 |
| 6 | Retaining Ring | Stainless Steel 316 | PVL 2514 | 2 |
| 7 | | | | |
| 8 | Spiroloc Circlip | Stainless Steel 302 | PVL 3062 | 2 |
| 9 | Adaptor | Thermoplastic | To suit membrane | 2 |
| 9a | Adaptor Spacer Shims | Thermoplastic | PVL 1674 | 8 |
| 10 | | | | |
| 11 | Thrust Ring | Thermoplastic | PVL 1228 | 1 |
| 12 | | | | |
| 13 | Cap Head Screw | Stainless Steel A4 | PVL 1520 | 6 |
| 14 | 'O' Seal End cap | EPDM | Size BS882 | 2 |
| 15 | 'O' Seal Feed/End Cap | EPDM | Size BS327 | 2 |
| 16 | 'O' Seal Hub/End Cap | EPDM | Size BS225 | 4 |
| 17 | 'O' Seal Prod/Adaptor | EPDM | Size BS219 | 2 |
| 18 | 'O' Seal Adaptor | EPDM | To suit membrane | 2/4 |
| 19 | Strap | Stainless Steel/Neoprene | PVL 1211 | 2/3 |
| 20 | Saddle | Urethane | PVL 1075 | 2/3 |
| 21 | Nameplate | Vinyl | | 1 |

The company reserves the right to alter specifications without prior notice.



Phoenix Vessels Ltd

Unit 2, The Old Bakery, Lower Tuffley Lane, Gloucester GL2 5DP
 Telephone: (01452) 311673 Fax: (01452) 310295
 e-mail: info@phoenixvessels.co.uk
 Internet: www.phoenixvessels.co.uk

