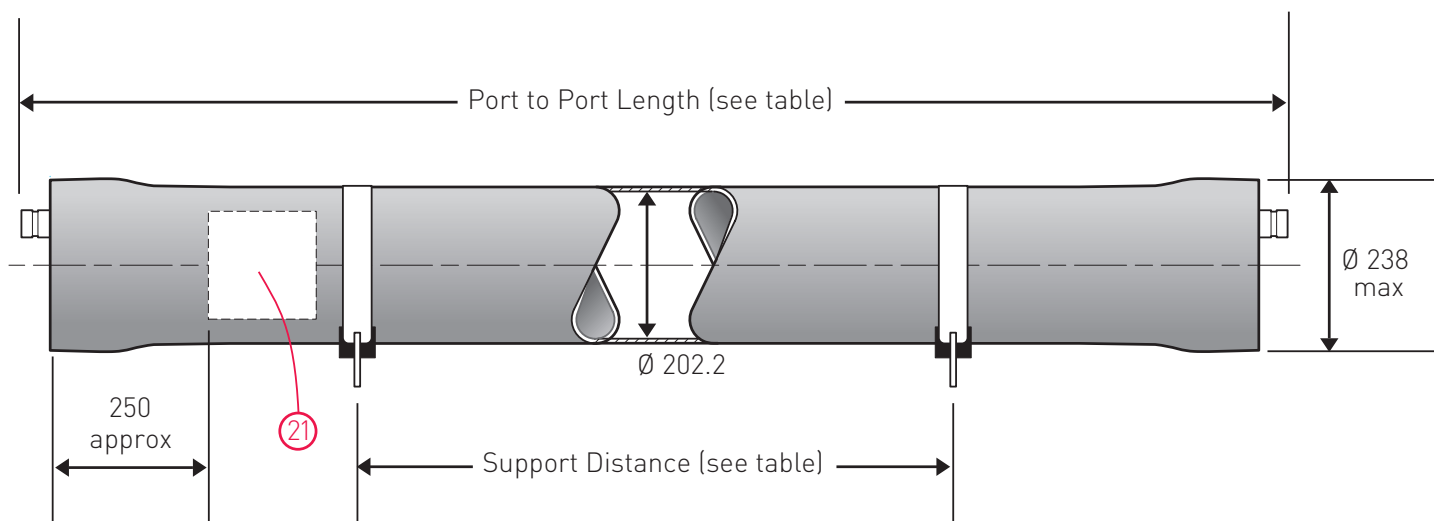


8" End Port Pressure Vessel 300 psi (20.7 bar)

ORDER REFERENCE
See Box Below



3017

Working Pressure: 300 psi

Working Temperature: 1° to 45°C

Assembly Drawing: 1MNC 3017

Does not conform to ASME X

Body of vessel is manufactured completely from glass reinforced epoxy resins. Pressure vessels can be produced to cover all leading manufacturers membranes regardless of length. Please advise membrane type and length when requesting further details. Please adhere to recommended support positions, if in doubt contact Phoenix Vessel Technology.

Feed and concentrate connections: 1.5" Victualic. **Product connections:** 1.0" BSP Parallel (Female)

Order Reference	No of 40" Elements	Port to Port Length +/-7mm	2 Supports Max/Min	3 Supports Max/Min	Max Dry Weight
8E300N.1	1	1549	1100 700	- -	22 kg
8E300N.1.5	1.5	2057	1400 1000	- -	26 kg
8E300N.2	2	2565	1800 1300	- -	30 kg
8E300N.3	3	3581	2400 1800	2400 1800	38 kg
8E300N.4	4	4597	2950 2400	3250 2400	46 kg
8E300N.4.5	4.5	5105	3200 2800	3700 2800	50 kg
8E300N.5	5	5613	3450 3150	4150 3150	56 kg
8E300N.6	6	6629	4000 3800	5000 3800	65 kg
8E300N.7	7	7645	- -	5850 4850	74 kg
8E300N.7.5	7.5	8153	- -	6200 5350	78 kg

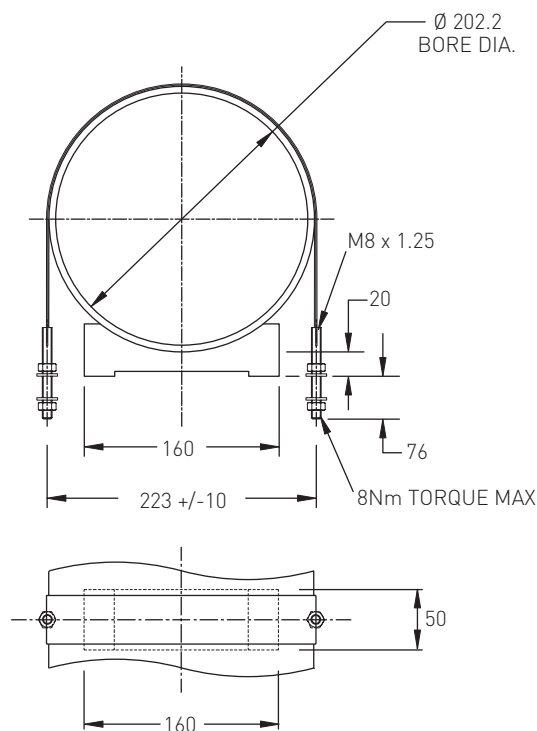
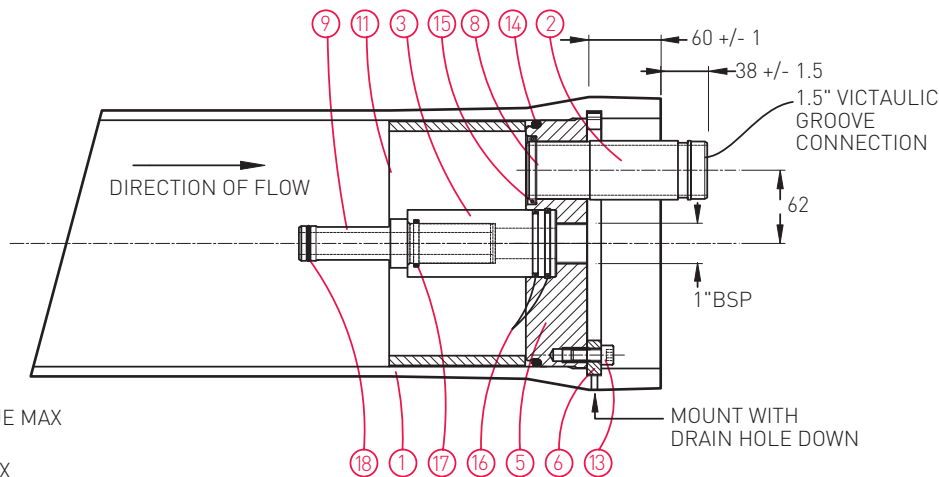
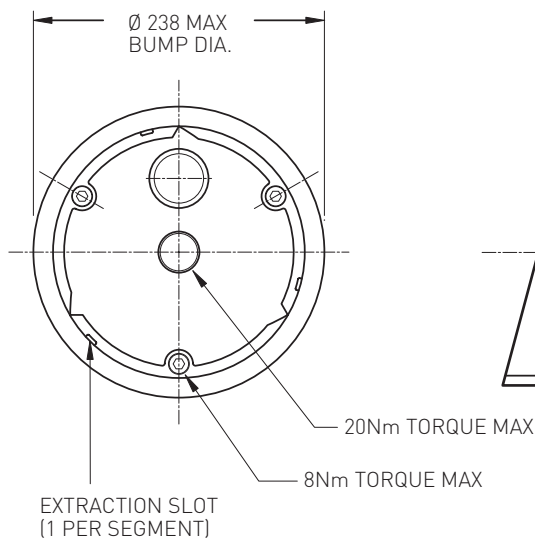
All dimensions in mm.
All dimensions and weights are nominal unless stated otherwise.

This data sheet supersedes all previous issues.
Product Code: 8E300N 09/06

8" End Port Pressure Vessel 300 psi (20.7 bar)

ORDER REFERENCE

See Overleaf



Item	Description	Material	Part No.	No. off
1	Vessel Body	Glass Fibre Epoxy Resin	BDY 3108	1
2	Feed/Concentrate Port	St. Steel - 316	CMP 2476	2
3	Hub	Thermoplastic	CMP 1550	2
4				
5	End Cap	Thermoplastic	CMP 2858	2
6	Retaining Ring Segment	St. Steel 304	CMP 1886	6
7				
8	Spiroloc Circlip	St. Steel 302	CMP 3062	2
9	Adaptor	Thermoplastic	To suit membrane	2
9a	Adaptor Spacer Shims	Thermoplastic	CMP 1674	8
10				
11	Thrust Ring	Thermoplastic	CMP 1228	1
12				
13	Cap Head Screw	St. Steel Grade A4	CMP 1520	6
14	'O' Seal End Cap	EPDM	BS882	2
15	'O' Seal Feed/End Cap	EPDM	BS327	2
16	'O' Seal Hub/End Cap	EPDM	BS225	4
17	'O' Seal Prod/Adaptor	EPDM	BS219	2
18	'O' Seal Adaptor	EPDM	To suit membrane	2/4
19	Strap	St. Steel/Neoprene	CMP 1211	2/3
20	Saddle	Urethane	CMP 1075	2/3
21	Nameplate	Vinyl	Not Available	1

Tighten all bolts/nuts to 50% of the maximum torque figure.

DO NOT EXCEED THE MAXIMUM TORQUE.

For lubricants and general assembly refer to the [User Guide on our website](#).

The company reserves the right to alter specifications without prior notice.
This data sheet supersedes all previous issues. Product Code: 8E300N 09/06