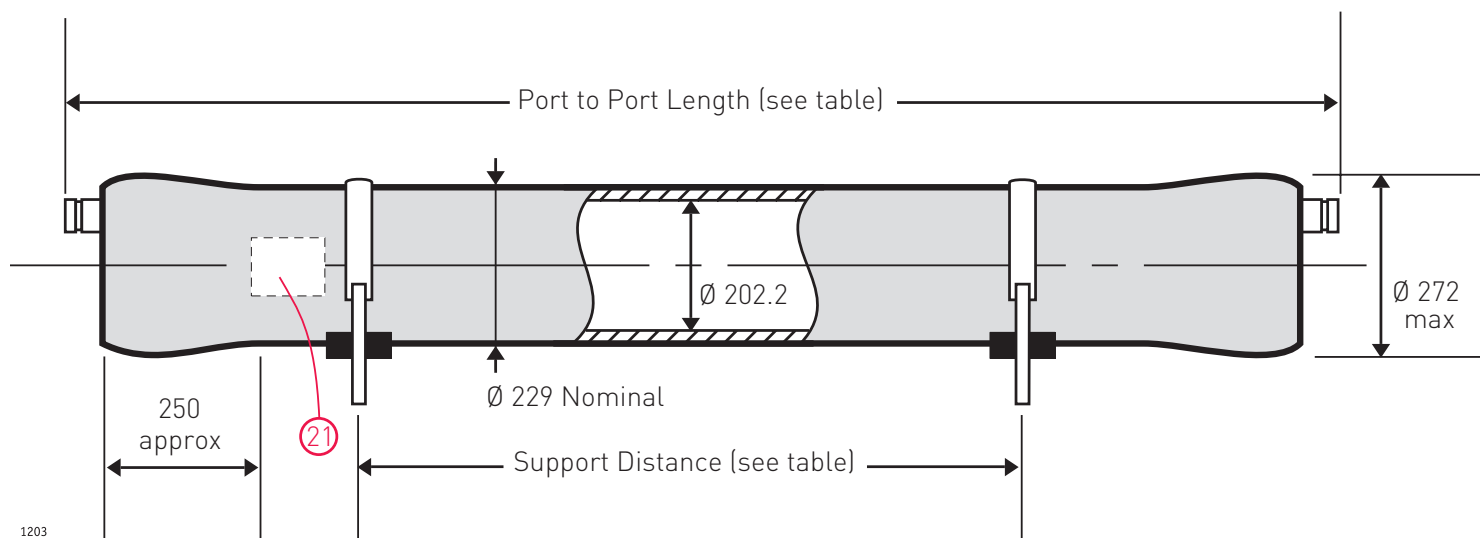


**8" End Port Pressure Vessel 1000 psi (69.0 bar)**

**ORDER REFERENCE**  
See Box Below



**Working Pressure:** 1000 psi  
**Assembly Drawing:** 1MNC 1203

**Working Temperature:** -7° to 45°C  
**Design Code:** ASME X

Body of vessel is manufactured completely from glass reinforced epoxy resins. Pressure vessels can be produced to cover all leading manufacturers membranes regardless of length. Please advise membrane type and length when requesting further details. Please adhere to recommended support positions, if in doubt contact Phoenix Vessel Technology.

**Feed and concentrate connections:** 1.5" Victualic.    **Product connections:** 1.0" BSP Parallel (Male) or 1.0" NPT (Female)

Order Reference	No of 40" Elements	Port to Port Length +/-7mm	Max Support Position	Min Support Position	Max Dry Weight
8E1000X.1	1	1651	875	500	55 kg
8E1000X.1.5	1.5	2159	1400	500	65 kg
8E1000X.2	2	2667	1890	500	75 kg
8E1000X.3	3	3683	2910	960	95 kg
8E1000X.4	4	4699	3190	1970	114 kg
8E1000X.4.5	4.5	5207	3375	2480	124 kg
8E1000X.5	5	5715	3560	2990	134 kg
8E1000X.6	6	6731	4020	4020	153 kg
8E1000X.7	7	7747	6170 c	5090 c	173 kg
8E1000X.7.5	7.5	8255	6220 c	5330 c	183 kg

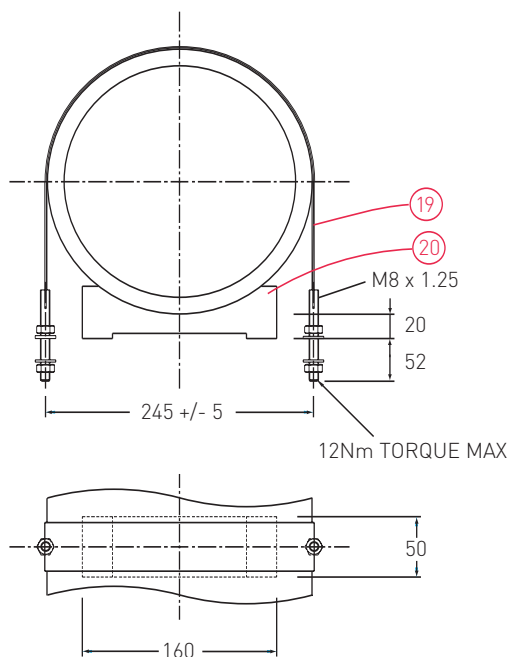
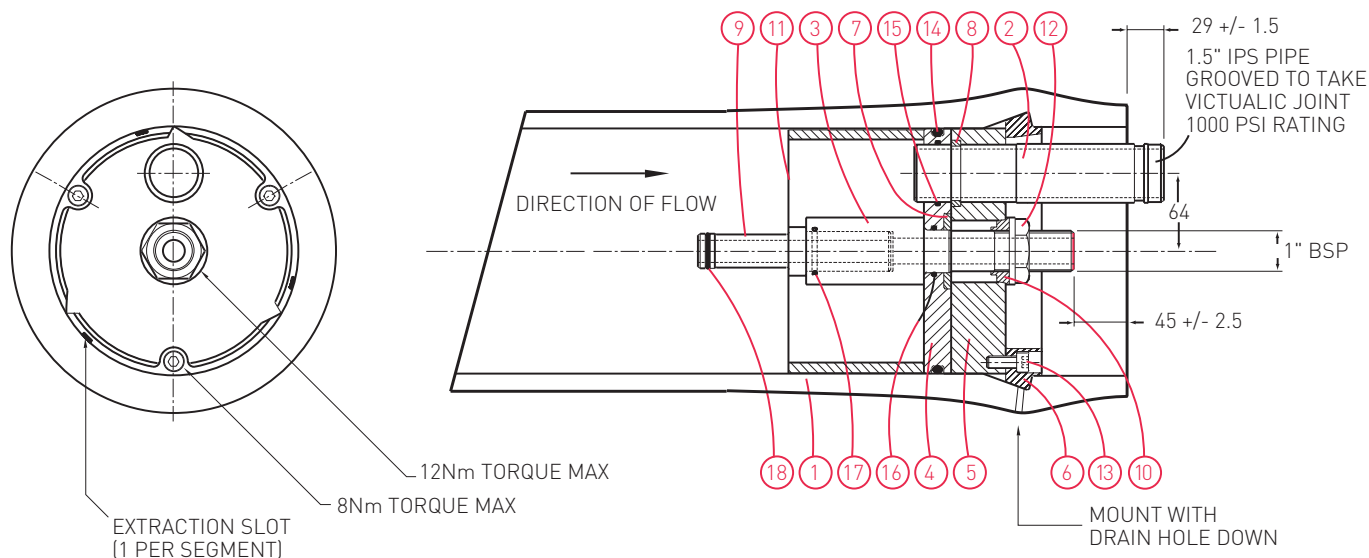
All dimensions in mm.    c = Central support required.  
All dimensions and weights are nominal unless stated otherwise.

This data sheet supersedes all previous issues.  
Product Code: 8E1000X 09/06

## 8" End Port Pressure Vessel 1000 psi (69.0 bar)

**ORDER REFERENCE**

See Overleaf



Item	Description	Material	Part No.	No. off
1	Vessel Body	Glass Fibre Epoxy Resin	BDY 1219	1
2	Feed/Concentrate Port	Duplex St. Steel - 2507	CMP 1167	2
3	Product Port	Thermoplastic	CMP 1946	2
4	End Plate	Thermoplastic	CMP 1952	2
5	Backing Plate	Anodised Aluminium	CMP 1768	2
6	Retaining Ring Segment	St. Steel 316	CMP 1470	6
7	Support Washer	St. Steel 316	CMP 1888	2
8	Retaining Ring (Port)	St. Steel 316	CMP 1176	2
9	Adaptor	Thermoplastic	To suit membrane	2
10	Anti-rotation Collet	Thermoplastic	CMP 1892	2
11	Thrust Ring	Thermoplastic	CMP 1228	1
12	1" BSP Backnut	Thermoplastic	CMP 1179	2
13	Cap Head Screw	St. Steel Grade A4	CMP 1520	6
14	'O' Seal Endplate	EPDM	BS882	2
15	'O' Seal Feed Port	EPDM	BS225	2
16	'O' Seal Prod/Endplate	EPDM	BS220	2
17	'O' Seal Prod/Adaptor	EPDM	BS219	2
18	'O' Seal Adaptor	EPDM	To suit membrane	2/4
19	Strap	St. Steel/Neoprene	CMP 1211	2/3
20	Saddle	Urethane	CMP 1075	2/3
21	Nameplate	Aluminium or Vinyl	Not Available	1

Tighten all bolts/nuts to 50% of the maximum torque figure.

**DO NOT EXCEED THE MAXIMUM TORQUE.**

For lubricants and general assembly refer to the [User Guide on our website](#).

The company reserves the right to alter specifications without prior notice.

*This data sheet supersedes all previous issues.*

Product Code: 8E1000X 09/06