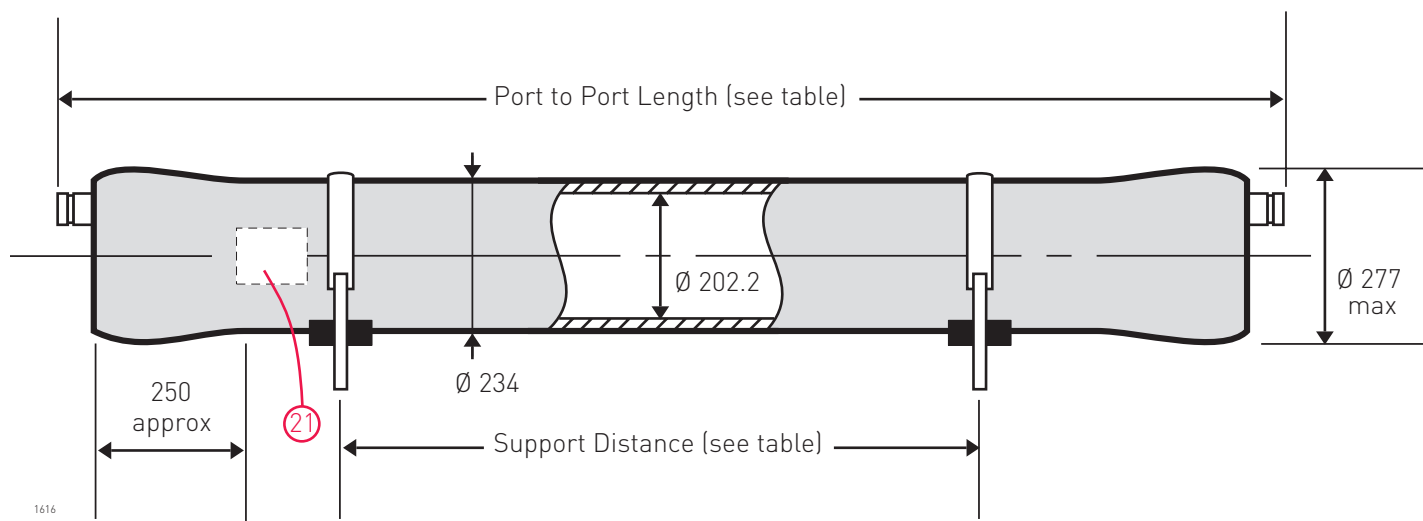


8" End Port Pressure Vessel 1200 psi (82.8 bar)

ORDER REFERENCE
See Box Below



Working Pressure: 1200 psi
Assembly Drawing: 1MNC 1616

Working Temperature: -7° to 45°C
Design Code: ASME X

Body of vessel is manufactured completely from glass reinforced epoxy resins. Pressure vessels can be produced to cover all leading manufacturers membranes regardless of length. Please advise membrane type and length when requesting further details. Please adhere to recommended support positions, if in doubt contact Phoenix Vessel Technology.

Feed and concentrate connections: 1.5" Victualic. **Product connections:** 1.0" BSP Parallel (Male) or 1.0" NPT (Female)

Order Reference	No of 40" Elements	Port to Port Length +/-7mm	Max Support Position	Min Support Position	Max Dry Weight
8E1200X.1	1	1702	875	500	61 kg
8E1200X.1.5	1.5	2210	1400	500	73 kg
8E1200X.2	2	2718	1890	500	85 kg
8E1200X.3	3	3734	2910	960	108 kg
8E1200X.4	4	4750	3190	1970	131 kg
8E1200X.4.5	4.5	5258	3375	2480	143 kg
8E1200X.5	5	5766	3560	2990	155 kg
8E1200X.6	6	6782	4020	4020	177 kg
8E1200X.7	7	7798	6170 c	5090 c	201 kg
8E1200X.7.5	7.5	8306	6220 c	5330 c	213 kg

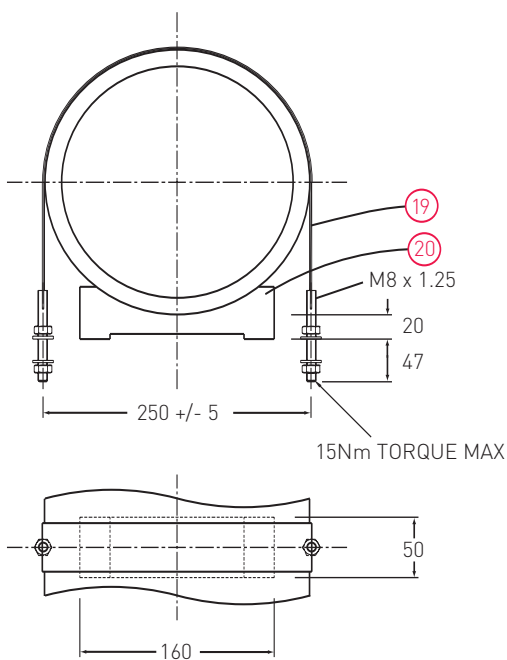
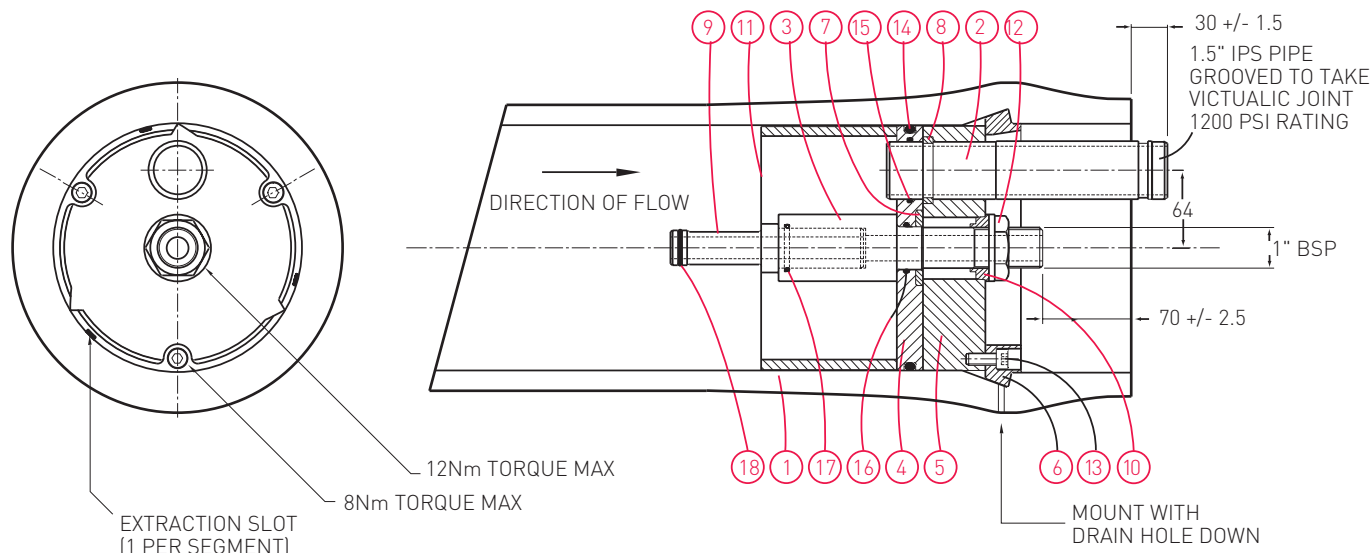
All dimensions in mm. c = Central support required.
All dimensions and weights are nominal unless stated otherwise.

This data sheet supersedes all previous issues.
Product Code: 8E1200X 09/06

8" End Port Pressure Vessel 1200 psi (82.8 bar)

ORDER REFERENCE

See Overleaf



Item	Description	Material	Part No.	No. off
1	Vessel Body	Glass Fibre Epoxy Resin	BDY 1649	1
2	Feed/Concentrate Port	Duplex St. Steel - 2507	CMP 1650	2
3	Product Port	Thermoplastic	CMP 1946	2
4	End Plate	Thermoplastic	CMP 1952	2
5	Backing Plate	Anodised Aluminium	CMP 1818	2
6	Retaining Ring Segment	St. Steel 316	CMP 1470	6
7	Support Washer	St. Steel 316	CMP 1888	2
8	Retaining Ring (Port)	St. Steel 316	CMP 1176	2
9	Adaptor	Thermoplastic	To suit membrane	2
10	Anti-rotation Collet	Thermoplastic	CMP 1892	2
11	Thrust Ring	Thermoplastic	CMP 1228	1
12	1" BSP Backnut	Thermoplastic	CMP 1179	2
13	Cap Head Screw	St. Steel Grade A4	CMP 1520	6
14	'O' Seal Endplate	EPDM	BS882	2
15	'O' Seal Feed Port	EPDM	BS225	2
16	'O' Seal Prod/Endplate	EPDM	BS220	2
17	'O' Seal Prod/Adaptor	EPDM	BS219	2
18	'O' Seal Adaptor	EPDM	To suit membrane	2/4
19	Strap	St. Steel/Neoprene	CMP 1211	2/3
20	Saddle	Urethane	CMP 1075	2/3
21	Nameplate	Aluminium or Vinyl	Not Available	1

Tighten all bolts/nuts to 50% of the maximum torque figure.

DO NOT EXCEED THE MAXIMUM TORQUE.

For lubricants and general assembly refer to the [User Guide on our website](#).

The company reserves the right to alter specifications without prior notice.

This data sheet supersedes all previous issues.

Product Code: 8E1200X 09/06