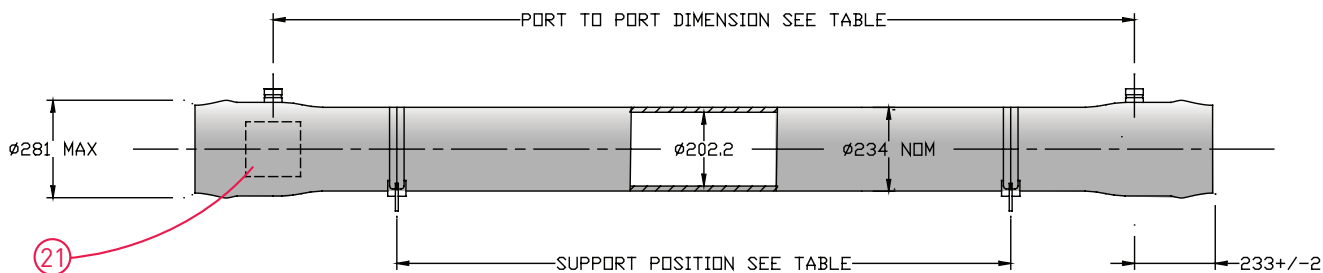


8" Side Port Pressure Vessel 1200 psi (82.8 bar)

ORDER REFERENCE
See Box Below



Working Pressure: 1200 psi

Working Temperature: -7° to 45°C

Assembly Drawing: 1MNC 2101

Design Code: ASME X

Body of vessel is manufactured completely from glass reinforced epoxy resins. Pressure vessels can be produced to cover all leading manufacturers membranes regardless of length. Please advise membrane type and length when requesting further details. Please adhere to recommended support positions, if in doubt contact Phoenix Vessel Technology.

Feed and concentrate connections: 1.5" or 2" Victualic.

Product connections: 1.0" BSP or 1.0" NPT (Female).

| Order Reference | No of 40" Elements | Port to Port Length +/-1mm | Max Support Position | Min Support Position | Max Dry Weight |
|-----------------|--------------------|----------------------------|----------------------|----------------------|----------------|
| 8S1200N.1 | 1 | 1143 | 650 | 500 | 74 kg |
| 8S1200N.1.5 | 1.5 | 1651 | 1150 | 500 | 85 kg |
| 8S1200N.2 | 2 | 2159 | 1650 | 500 | 96 kg |
| 8S1200N.3 | 3 | 3175 | 2680 | 960 | 117 kg |
| 8S1200N.4 | 4 | 4191 | 3190 | 1970 | 139 kg |
| 8S1200N.4.5 | 4.5 | 4699 | 3375 | 2480 | 150 kg |
| 8S1200N.5 | 5 | 5207 | 3560 | 2990 | 160 kg |
| 8S1200N.6 | 6 | 6223 | 4020 | 4020 | 182 kg |
| 8S1200N.7 | 7 | 7239 | 6170 c | 5090 c | 203 kg |
| 8S1200N.7.5 | 7.5 | 7747 | 6220 c | 5330 c | 214 kg |

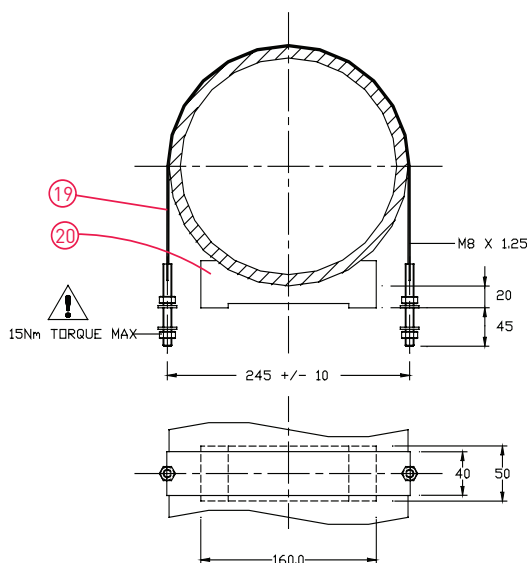
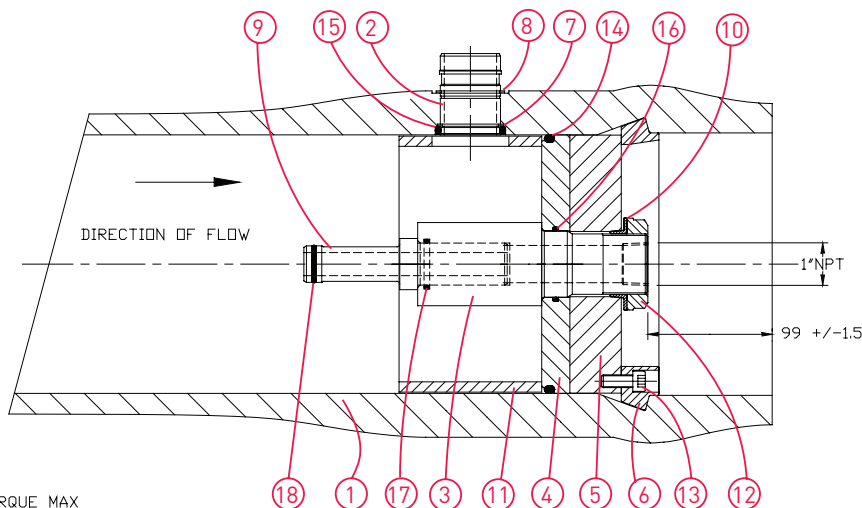
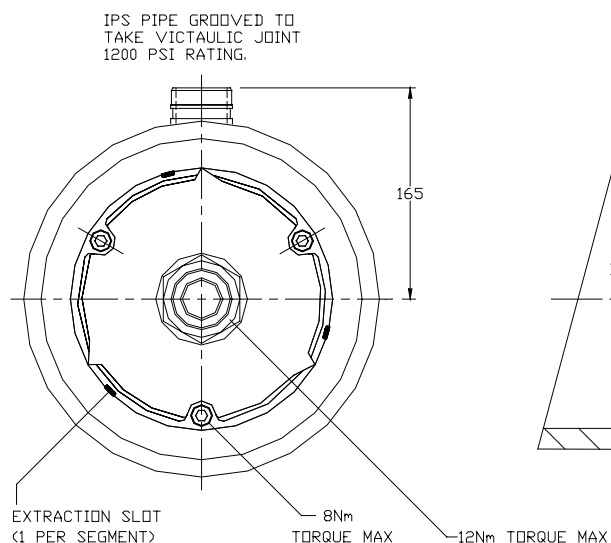
All dimensions in mm. c = Central support required.
All dimensions and weights are nominal unless stated otherwise.

This data sheet supersedes all previous issues.
Product Code: 8S1200N 09/06

8" Side Port Pressure Vessel 1200 psi (82.8 bar)

ORDER REFERENCE

See Overleaf



| Item | Description | Material | Part No. | No. off |
|------|------------------------|--|----------------------|----------------|
| 1 | Vessel Body | Glass Fibre Epoxy Resin | BDY 3111 | 1 |
| 2 | Feed/Concentrate Port | Duplex St. Steel 2507 1.5" Port Duplex St. Steel 2507 2.0" Port | CMP 2490 CMP 3254 | 2/3/4 2/3/4 |
| 3 | Product port | Thermoplastic | CMP 1915 | 2 |
| 4 | End Plate | Thermoplastic | CMP 1954 | 2 |
| 5 | Backing Plate | Anodised Aluminium | CMP 2302 | 2 |
| 6 | Retaining Ring Segment | St. Steel 316 | CMP 1470 | 6 |
| 7 | Port Circlip Internal | St. Steel 316 1.5" Port St. Steel 316 2.0" Port | CMP 2556 CMP 2555 | 2/3/4 2/3/4 |
| 8 | Port Circlip External | St. Steel 302 1.5" Port St. Steel 302 2.0" Port | CMP 2148 CMP 2029 | 2/3/4 2/3/4 |
| 9 | Adaptor | Thermoplastic | To suit membrane | 2 |
| 10 | Anti-rotation Collet | Thermoplastic | CMP 1894 | 2 |
| 11 | Thrust Ring | Thermoplastic | CMP 3069 ASSY | 1 |
| 12 | 1" BSP Backnut | Thermoplastic | CMP 1979 | 2 |
| 13 | Cap Head Screw | St. Steel Grade A4 | CMP 1520 | 6 |
| 14 | 'O' Seal Endplate | EPDM | BS882 | 2 |
| 15 | 'O' Seal Feed Port | EPDM 1.5" Port EPDM 2.0" Port | BS327 BS331 | 2/3/4 2/3/4 |
| 16 | 'O' Seal Hub/Endplate | EPDM | BS832 | 2 |
| 17 | 'O' Seal Prod/Adaptor | EPDM | BS219 | 2 |
| 18 | 'O' Seal Adaptor | EPDM | To suit membrane | 2/4 |
| 19 | Strap | St. Steel/Neoprene | CMP 1836 | 2/3 |
| 20 | Saddle | Urethane | CMP 1075 | 2/3 |
| 21 | Nameplate | Aluminium or Vinyl | Not Available | 1 |

Tighten all bolts/nuts to 50% of the maximum torque figure.
DO NOT EXCEED THE MAXIMUM TORQUE.

For lubricants and general assembly refer to the [User Guide on our website](#).

The company reserves the right to alter specifications without prior notice.
This data sheet supersedes all previous issues. Product Code: 8S1200N 09/06