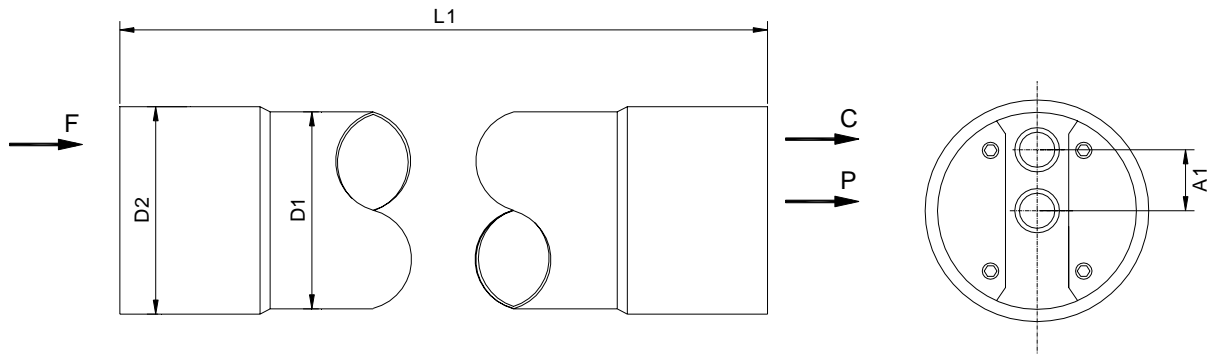


PRESSURE VESSEL / Stainless Steel

PVS- 4040 - x - 1000 - EP



- Pressure range: up to 69 bar / 1000 psi
- Temperature range: up to 85°C
- for all types of membrane elements
- on request with quality certification
- Material 316L / 1.4571
- including all necessary seals (EPDM) and internal adapters



F = Feed / Zulauf
 C = Concentrate / Konzentrat
 P = Permeate / Permeat

A₁ = 31 mm
 D₁ = 108 mm
 D₂ = 114 mm

Art. No.	Type	Elements per PV	Length L1 in mm	Feed connection	Concentrate connection	Permeate connection	Material
433 203	PVS-4040-1-1000 - EP	1	1100	1/2" BSP	1/2" BSP	1/2" BSP	316L
433 213	PVS-4040-2-1000 - EP	2	2115	1/2" BSP	1/2" BSP	1/2" BSP	316L
433 223	PVS-4040-3-1000 - EP	3	3132	1/2" BSP	1/2" BSP	1/2" BSP	316L
433 233	PVS-4040-4-1000 - EP	4	4150	1/2" BSP	1/2" BSP	1/2" BSP	316L
433 243	PVS-4040-5-1000 - EP	5	5165	1/2" BSP	1/2" BSP	1/2" BSP	316L
433 253	PVS-4040-6-1000 - EP	6	6185	1/2" BSP	1/2" BSP	1/2" BSP	316L

Pressure Vessel: polished inside, on the outside fine sharpened.
 Material: Stainless Steel 316L (1.4571)
 Head-Material: 316L (1.4571)
 Headfixing: spring washers, stainless steel

on request 3/4" victaulic connection for feed and concentrate

