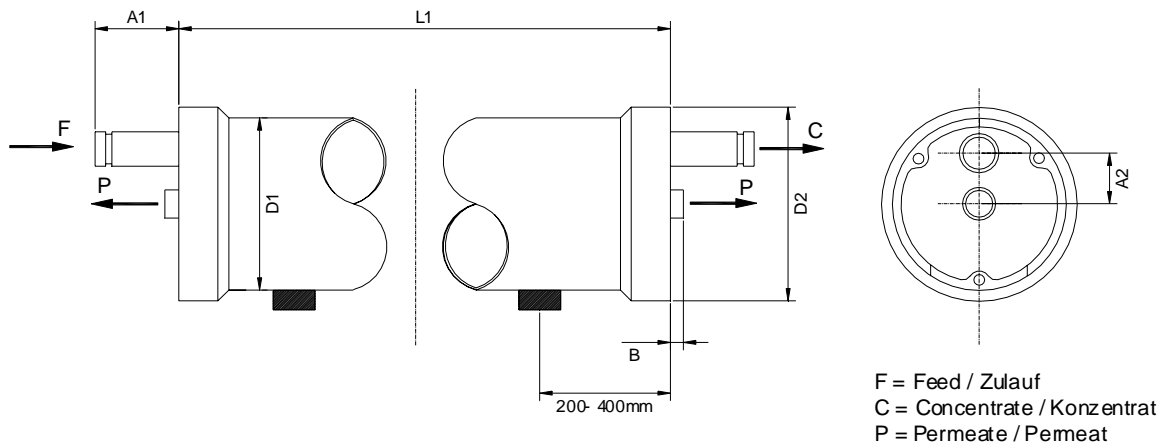


## PRESSURE VESSEL / Stainless Steel PVS- 8040 - x - 600 - EP - VC



- Pressure range: up to 41 bar / 600 psi
- Temperature range: up to 85°C
- for all types of membrane elements
- on request with quality certification
- Material 316L / 1.4404
- including all necessary seals ( EPDM ) and internal adapters



Scope of supply:

for Pressure Vessels: <= 4 Elements incl. 2 Saddles and 2 Straps  
for Pressure Vessels: >= 5 Elements incl. 3 Saddles and 3 Straps

including plug 1" for permeate outlet

A<sub>1</sub> = 90 mm  
A<sub>2</sub> = 65 mm  
B = 15 mm  
D<sub>1</sub> = 219 mm  
D<sub>2</sub> = 245 mm

Art. No.	Type	Elements per PV	Length L1 in mm	Feed connection	Concentrate connection	Permeate connection	Material
434 203	PVS-8040-1-600 - EP- VC	1	1200	1 1/2"-Vict.	1 1/2"-Vict.	1"-BSP F	316L
434 213	PVS-8040-2-600 - EP- VC	2	2215	1 1/2"-Vict.	1 1/2"-Vict.	1"-BSP F	316L
434 223	PVS-8040-3-600 - EP- VC	3	3235	1 1/2"-Vict.	1 1/2"-Vict.	1"-BSP F	316L
434 233	PVS-8040-4-600 - EP- VC	4	4250	1 1/2"-Vict.	1 1/2"-Vict.	1"-BSP F	316L
434 243	PVS-8040-5-600 - EP- VC	5	5270	1 1/2"-Vict.	1 1/2"-Vict.	1"-BSP F	316L
434 253	PVS-8040-6-600 - EP- VC	6	6445	1 1/2"-Vict.	1 1/2"-Vict.	1"-BSP F	316L

Pressure Vessel: polished inside, on the outside fine sharpened.

Material: Stainless Steel 316L (1.4571)

Head-Material: 316L (1.4571)

Headfixing: spring washers, stainless steel

PVS-8040-600 EP VC 09/05